



**A guide to making sense of a senseless world**  
Stefan Cammeraat  
2013

In order to make sense of this world in any significant manner we first of all have to divide it in portions we're able to grasp. Secondly it is also necessary to translate those divisions to a symbolic language, capable of representing the complex structures of life.

Afterwards it is possible to elaborate on the many complex relations and scenarios that appear between those concepts.

---

**Core Elements:**

People: 

Objects: 

Space: 

Now that we've constructed the symbolic language in order to represent the different things that will cross our path as we travel out in the world, it is time to look at the relations and events linking all of these different elements together.

---

### **Relations between Core Elements :**

People & people:  
Interaction



Objects & people:  
Function



Space & people:  
Movement



Objects & objects:  
Location



Objects & space:  
Division



---

Size and shape are variable due to different conditions

Lets for the sake of clarity consider a general working day and the different types of relations you encounter, and fit them into our symbolized worldview.

**General working day:**

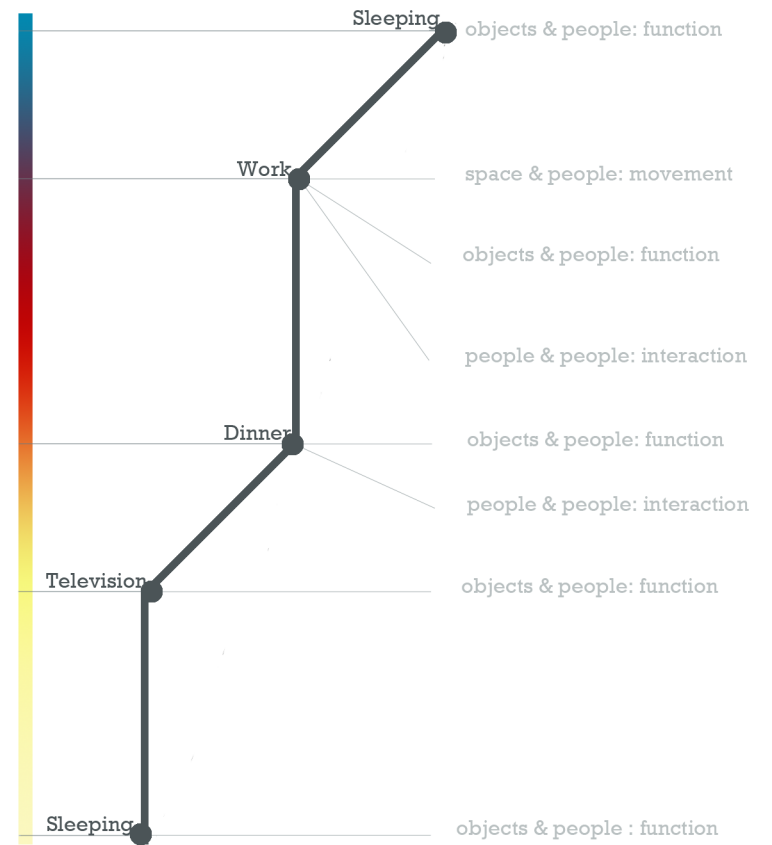


Fig. A

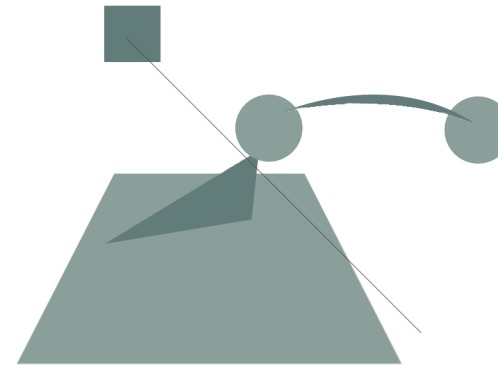


Now that we've made clear the process of our discourse it is possible to construct different scenarios altogether, and deduct from them the information required to make significant sense of this world.

---

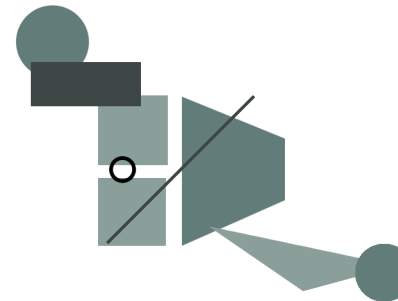
### **Different Scenarios :**

A.



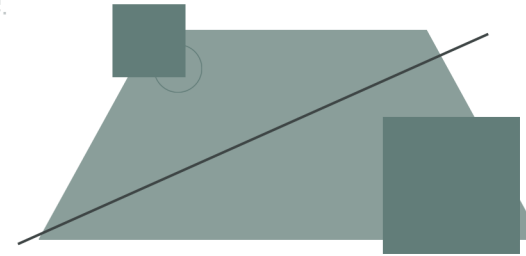
Public meeting scenario. People move through space, and interact with each other while objects define and divide space.

B.



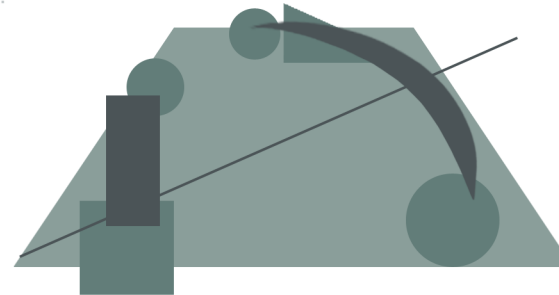
Regular public space scenario. People move and interact with a space defined and divided by objects, while taking no real notion of other human beings. They do not interact.

C.



Scenario without human interventions.  
Space and objects continue to define, divide and locate each other, without any true human significance or problems.

D.



Scenario with human interaction, movement through space and relations to physical objects and spatial definitions.

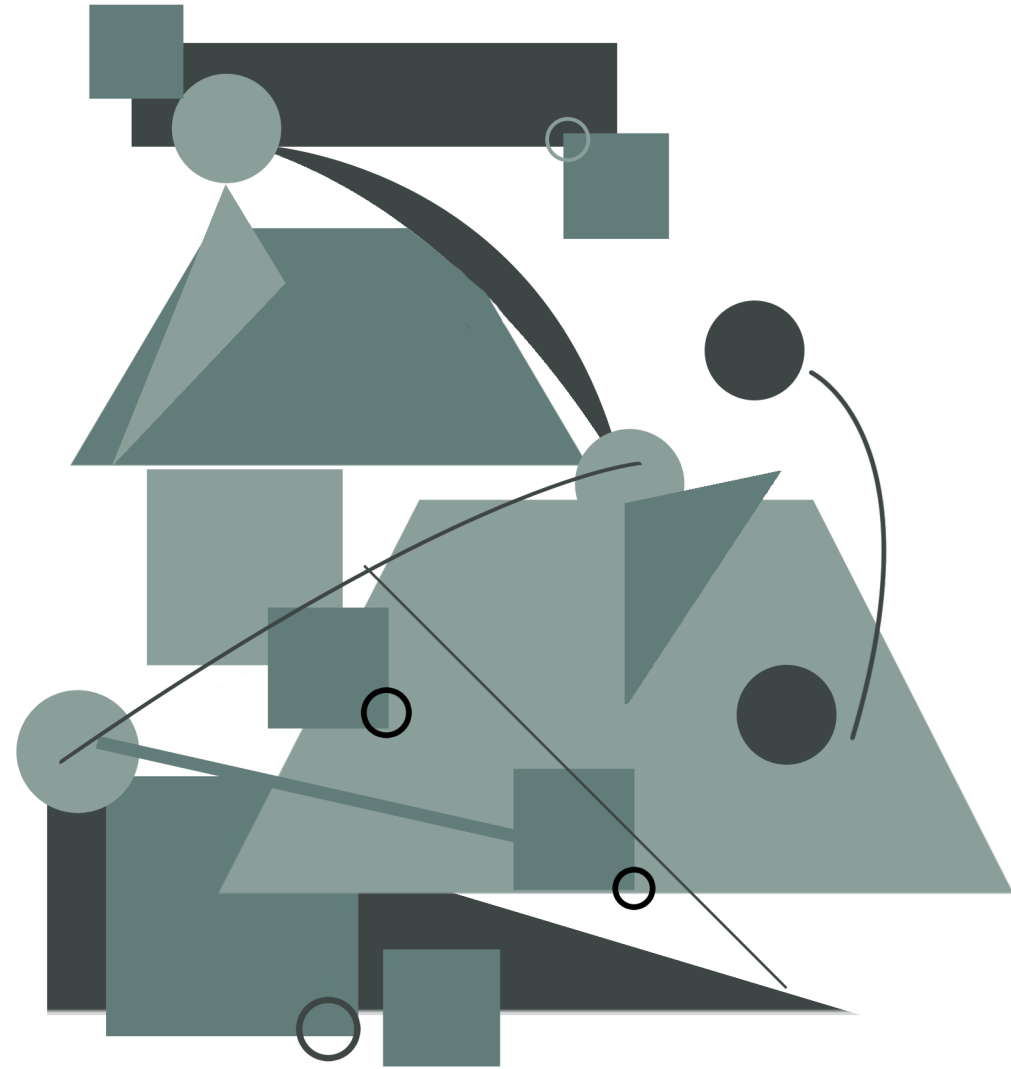


Fig. C



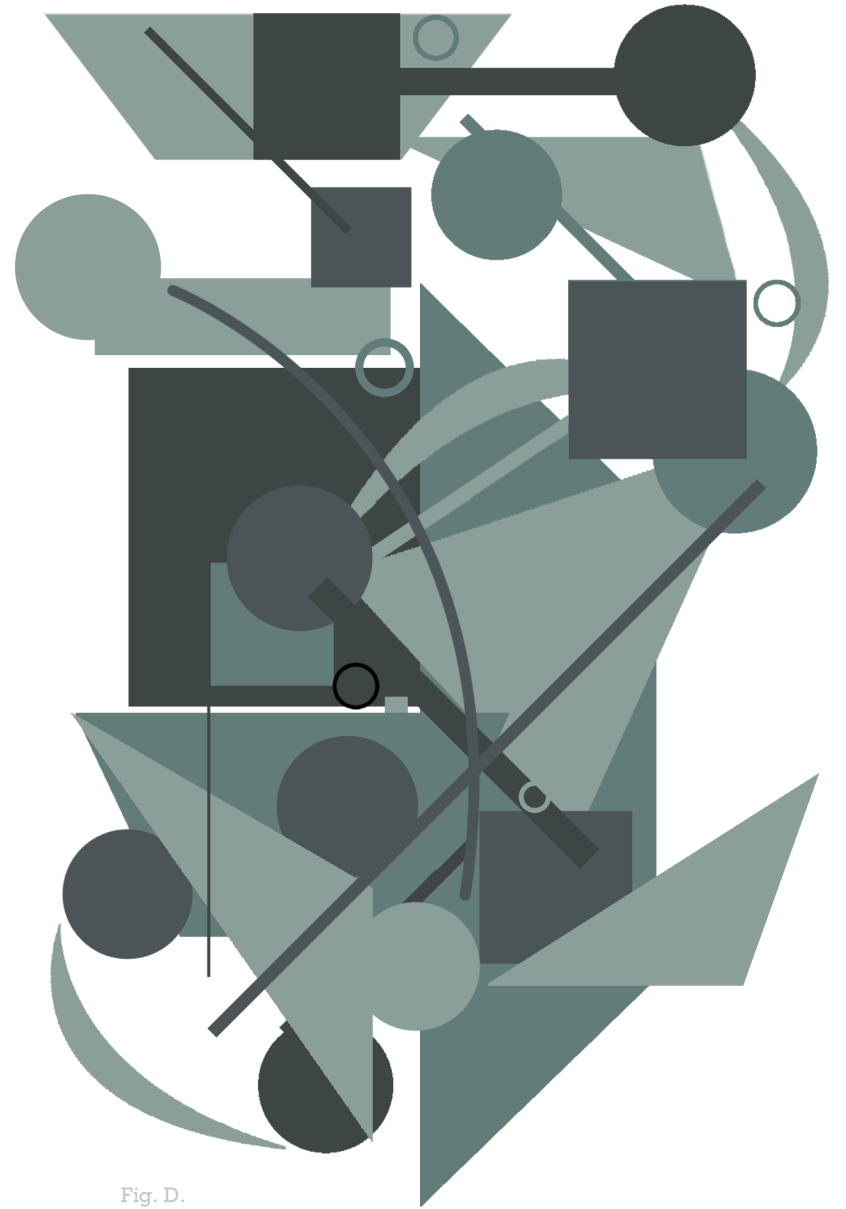


Fig. D.